

**British Society of Gerontology**  
**41<sup>st</sup> Annual Conference**

**Conference Handbook**



**Wednesday 11<sup>th</sup> July – Friday 13<sup>th</sup> July 2012**

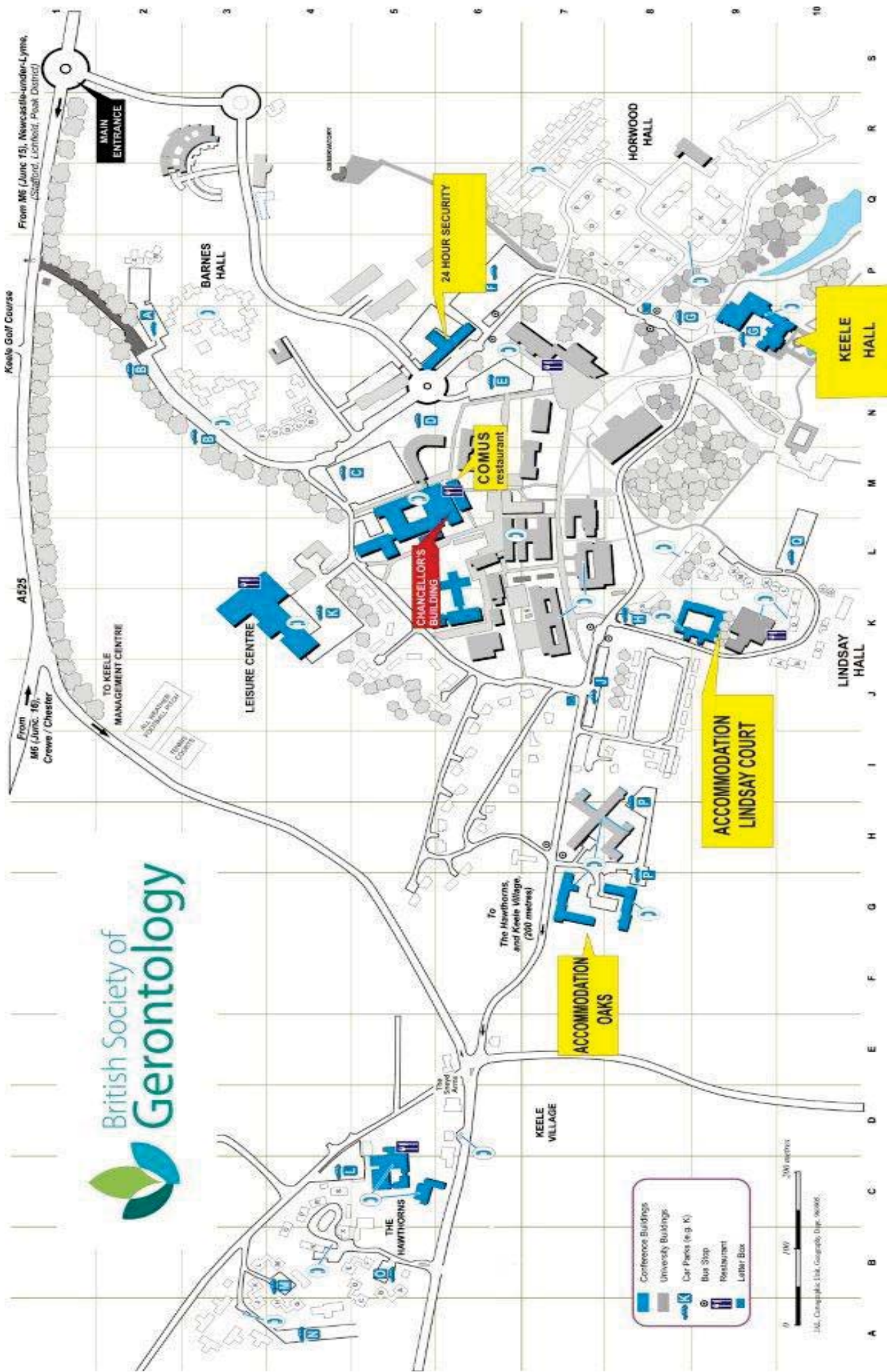
**Keele University**



new dynamics of ageing  
a cross-council research programme  
RES-356-25-0005







KEELE UNIVERSITY CAMPUS MAP

## **CONTENTS LIST**

<b>Welcome Message from Professor Miriam Bernard</b>	<b>1</b>
<b>BSG 2012 Conference Organising Team</b>	<b>2</b>
<b>Centre for Social Gerontology at Keele University</b>	<b>3</b>
<b>Overview of the Academic Programme</b>	<b>4</b>
<b>BSG 41<sup>st</sup> Annual General Meeting Agenda</b>	<b>6</b>
<b>Academic Paper /Symposia Session Grid</b>	<b>7</b>
<b>Poster Presentations</b>	<b>21</b>
<b>Invitation to an Exhibition of Current Visual Research</b>	<b>24</b>
<b>Plenary Speaker Biographies</b>	<b>25</b>
<b>Panel on Ageing Research Speaker Biographies</b>	<b>26</b>
<b>After Dinner Speaker Biographies</b>	<b>28</b>
<b>Linked Events</b>	<b>30</b>
<b>The Ages &amp; Stages Theatre Company</b>	<b>31</b>
<b>Conference Sponsorship</b>	<b>32</b>
<b>Exhibition Information</b>	<b>33</b>
<b>AGE UK</b>	<b>34</b>
<b>The Policy Press</b>	<b>35</b>
<b>Lifelong Health and Wellbeing</b>	<b>36</b>
<b>Conference and Venue Information</b>	<b>37</b>
<b>Join the BSG!</b>	<b>45</b>
<b>ERA: Emerging Researchers in Ageing</b>	<b>46</b>
<b>BSG Conference 2013</b>	<b>47</b>



Keele University



Centre for Social Gerontology

## WELCOME MESSAGE

Both as BSG President and as Chair of the Organising Committee, it is with great pleasure that I extend a warm welcome to everyone attending this year's Conference. Members of the Centre for Social Gerontology are delighted to be hosting the Society's 41<sup>st</sup> annual conference at Keele for what we think might be a record fourth time (previous Keele conferences took place in 1985; 1995 and 2005).

We have put together a stimulating academic programme including two superb keynote speakers:

- Professor Toni Calasanti, Virginia Tech, USA
- Professor Murna Downs, Bradford Dementia Centre, UK

and a distinguished panel to debate the 'Future of Ageing Research':

- Sally-Marie Bamford, International Longevity Centre-UK
- Mark Gorman, HelpAge International
- Philly Hare, Joseph Rowntree Foundation
- Peter Lansley, University of Reading

To provide coherence to the conference, all the academic papers, symposia and posters have been organised into eight themes: Arts & Humanities; Critical Perspectives; Environment & Ageing; Health, Wellbeing & Care; Intergenerational Perspectives; New Ageing Populations/New Approaches; Participation & Engagement; and Understanding Dementia. To assist presenters, we have individual members of our organising team acting as stream co-coordinators; and to assist delegates, we have colour coded the themes on both the conference programme and in the abstract booklet. We hope this makes it simple to find your way round the programme!

Keele conferences always try and reflect the links with our locality and this one is no exception. On the opening evening of the conference, we shall be going to the New Vic Theatre – Europe's first purpose-built theatre-in-the-round – to see the premiere of the new social documentary *Our Age Our Stage* and the associated 'Ages & Stages Exhibition'. Conference delegates will be able to join local older people and invited guests at a wine reception beforehand and take part in a Q&A session after the performance.

The conference also coincides with – and celebrates - a number of important anniversaries. For the Society, it marks the end of our 40<sup>th</sup> year which began in spectacular fashion at last year's Plymouth conference and will end with a bang – or a number of bangs – over Keele Lakes. At Keele, we are celebrating not only 25 years of the Centre for Social Gerontology but also 50 years since the University received its charter. Our Vice Chancellor Professor Nick Foskett will join us for the 'Taste of Staffordshire' Gala Conference Dinner on Thursday evening to formally welcome delegates and introduce our after-dinner speaker.

Finally, I would like to extend my appreciation to our conference sponsors and exhibitors; and say a big thank-you to Sharon Faulke and Joanne Goode in the Keele conference office, to Sue Humphries our administrator, and to my colleagues on the organising committee. We have all worked hard for the last two years to make this a BSG conference to remember – hopefully for all the right reasons!

**Professor Miriam Bernard**



## BSG 2012 CONFERENCE ORGANISING TEAM



**Bernadette Bartlam**  
Lecturer in Mixed Methods,  
Research Institute for Primary Care  
and Health Sciences

*Participation and Engagement  
Stream Coordinator*



**Chris Phillipson**  
Professor of Applied Social Studies  
and Social Gerontology, School of  
Sociology and Criminology

*Critical Perspectives Stream  
Coordinator*



**Mim Bernard**  
Professor of Social Gerontology,  
School of Public Policy and  
Professional Practice

*President (2010-12) of the British  
Society of Gerontology*



**Mo Ray**  
Senior Lecturer in Social Work,  
School of Public Policy and  
Professional Practice

*Understanding Dementia Stream  
Coordinator*



**Sue Humphries**  
Administrator, Faculty of  
Humanities and Social Sciences



**Michelle Rickett**  
Research Associate, Research  
Institute for Social Sciences

*Arts and Humanities Stream  
Coordinator*



**Jenny Liddle**  
Research Associate, Research  
Institute for Social Sciences

*Environment and Ageing Stream  
Coordinator*



**Dana Rosenfeld**  
Senior Lecturer in Sociology,  
School of Sociology and  
Criminology

*New Ageing Populations/New  
Approaches Stream Coordinator*



**Julie Melville**  
PhD Student, Research Institute  
for Social Sciences

*Intergenerational Perspectives  
Stream Coordinator*



**Julius Sim**  
Professor of Health Care  
Research, School of Health and  
Rehabilitation

*Health, Wellbeing and Care Stream  
Coordinator*



**John Miles**  
PhD Student, Research Institute  
for Social Sciences

*Health, Wellbeing and Care  
Stream Coordinator*



Since 1987 the Centre for Social Gerontology at Keele University has been at the forefront of research, teaching and policy development in the field of ageing. The Centre's work on the social analysis of ageing reflects the importance of diversity through all phases of the life course. Adopting interdisciplinary perspectives, our research focuses on areas such as family and kinship, women and ageing, social inclusion and exclusion, inter-generational relationships, and the social policy of later life.

### Selected recent publications

- Bernard M., Liddle J., Bartlam B., Scharf T. and Sim J. (2012) *Then and now: evolving community in the context of a retirement village*. Ageing and Society, vol. 32(1), 103-129.
- Chambers. P., Allan, G., Phillipson.C. and Ray, M. (2009) *Family Practices in Later Life*, Bristol: Policy Press.
- Dannefer, D. and Phillipson, C. (eds) (2010) *The SAGE Handbook of Social Gerontology*, London: Sage.
- Phillipson C.R. (2011) *Developing Age-Friendly Communities: New Approaches to Growing Old in Urban Environments*. In Handbook of the Sociology of Aging. Angel, J.L. and Settersten, R. (Eds.), Verlag: Springer.
- Ray, M., Phillips, J. and Bernard, M. (2008) *Critical Issues in Social Work with Older People*, Hampshire: Palgrave.
- Rosenfeld, D. (2010) *Lesbian, gay, bisexual, and transgender ageing: Shattering myths, capturing lives*. In International Handbook of Social Gerontology. Dannefer, D. and Phillipson, C. (Eds.), Sage Publications.
- Sim J, Bartlam B, Bernard M. (2011). *The CASP-19 as a measure of quality of life in old age: evaluation of its use in a retirement community*. Qual Life Res, vol. 20(7), 997-1004.

### Selected recent research grants

- 2012 *Ageing without children* (M. Ray & M.P. Sullivan). Averil Osborn Memorial Fund.
- 2011-2013 *HIV and Later Life* (D. Rosenfeld, D. Ridge, J. Anderson, J. Catalan, D. Asboe, V. Delpech, S. Collins). MRC Lifelong Health and Wellbeing Cross-Council Programme and the ESRC.
- 2010-2011 *'The Lost Generation': The Social Worlds of Older Gay Male Survivors of the AIDS Epidemic* (D. Rosenfeld). The British Academy.
- 2009-2012 *Ages and Stages: The Place of Theatre in Representations and Recollections of Ageing* (M. Bernard, L. Munro, J. Rezzano, D. Amigoni & M. Murray). Cross-council 'New Dynamics of Ageing' programme.
- 2010-2012 *Preventing pain from interfering with later life: an action-oriented qualitative study*. (J. Richardson, K. Jordan, M. Bernard, J. Sim & B. Dudley). NIHR, Research for Patient Benefit (RfPB) Programme.

## ACADEMIC PROGRAMME

All events in the academic programme, together with all meals (apart from the Gala Conference Dinner) will take place in the Chancellor's Building (CB)

Wednesday, 11 <sup>th</sup> July 2012		
07.30 – 09.00	Breakfast	Comus Restaurant
10.00 – 18.00	Registration & Enquiry Desk Open	Foyer
11.45 – 12.30	Lunch	Comus Restaurant
12.30 – 12.50	<b>Conference Opening and Introductions</b> <i>[Prof Miriam Bernard, BSG President]</i>	Westminster Theatre
12.50 – 13.50	<b>Plenary 1: <i>Different or Unequal? Considering Power Relations</i></b>  Prof Toni Calasanti (Virginia Tech, USA) <i>[Chair: Prof Robin Means, BSG President-elect]</i>	Westminster Theatre
14.00 – 15.40	<b>Session 1: Symposia / Papers</b>	Various
15.40 – 16.10	*Afternoon Refreshments and Poster Viewing	Exhibition Suite
16.10 – 17.10	<b>Session 2: Symposia / Papers</b>	Various
17.15 – 18.00	<b>Staffordshire High Tea</b> <i>[sponsored by the Beth Johnson Foundation]</i>	Comus Restaurant
18.15 – 18.30	Coaches depart for the New Vic Theatre	CB Car Park
18.45 – 19.30	<b>Reception and viewing of 'Ages &amp; Stages' exhibition</b>	New Vic Theatre
19.30 – 20.30	<b>Performance: 'Our Age, Our Stage'</b>	Main Auditorium
20.30 – 21.00	<b>Q&amp;A session with Director, cast and crew, and research team</b>	
21.15 – 21.30	Coaches depart for Keele University	
21.45 – 00.00	<b>Late Supper and Cash Bar</b>	Comus Restaurant

Thursday, 12 <sup>th</sup> July 2012		
07.30 – 08.40	<b>Breakfast</b>	Comus Restaurant
08.00 – 18.00	Registration & Enquiry Desk Open	Foyer
08.40 – 10.20	<b>Session 3: Symposia / Papers</b>	Various
10.20 – 10.50	*Morning Refreshments and Poster Viewing	Exhibition Suite
10.50 – 11.50	<b>Plenary 2: <i>From Invisible Patient to Citizen and Activist: Dementia Comes of Age</i></b>  Prof Murna Downs (Bradford Dementia Centre, UK) <i>[Chair: Dr Mo Ray, Centre for Social Gerontology, Keele]</i>	Westminster Theatre

<b>12.00 – 13.00</b>	<b>BSG AGM</b>	Westminster Theatre
<b>13.00 – 14.00</b>	Lunch	Comus Restaurant
<b>14.00 – 15.40</b>	<b>Session 4: Symposia / Papers</b>	Various
<b>15.40 – 16.40</b>	<b>'Special' Tea break Book Launch &amp; 'meet the authors' event</b> <i>[sponsored by Policy Press]</i>	Exhibition Suite
<b>16.40 – 18.20</b>	<b>Session 5: Symposia / Papers</b>	Various
<b>19.15 – 20.00</b>	Wine Reception	Salvin Suite, Keele Hall
<b>20.00 – 00.00</b>	<b>'A Taste of Staffordshire' Gala Conference Dinner</b> After dinner, Prof Nick Fosskett, Vice Chancellor, will welcome delegates and introduce Dr Alan Hatton-Yeo from the Beth Johnson Foundation. <b>Fireworks over Keele Hall Lakes</b>	Ballroom, Keele Hall

## Friday, 13<sup>th</sup> July 2012

<b>07.30 – 08.40</b>	Breakfast	Comus Restaurant
<b>08.00 – 14.00</b>	<b>Registration &amp; Enquiry Desk Open</b>	Foyer
<b>08.40 – 10.00</b>	<b>Session 6: Symposia / Papers</b>	Various
<b>10.00 – 10.30</b>	*Morning Refreshments and Poster Viewing	Exhibition Suite
<b>10.30 – 11.30</b>	<b>Session 7: Papers</b>	Various
<b>11.40 – 12.55</b>	<b>Plenary 3: <i>The Future of Ageing Research</i></b> Sally-Marie Bamford (International Longevity Centre-UK) Mark Gorman (HelpAge International) Philly Hare (Joseph Rowntree Foundation) Peter Lansley (University of Reading) <i>[Panel Chair: Prof Chris Phillipson, Centre for Social Gerontology, Keele]</i>	Westminster Theatre
<b>12.55 – 13.15</b>	<b>Award of Stirling Prize (best student poster)</b> <b>BSG 2013 Conference at Oxford</b> <b>Close of Keele conference</b>	Westminster Theatre
<b>13.15 – 14.00</b>	Packed Lunch & Depart	Foyer

\* Atlas.ti will be showing a DVD during these refreshment breaks; delegates can then answer 3 questions to receive a 20% off voucher and be entered into a raffle to win a full license worth £390.00



## 41<sup>st</sup> ANNUAL GENERAL MEETING

Thursday 12<sup>th</sup> July, 2012 – noon-1.00pm  
Westminster Theatre, University of Keele

### AGENDA

Chair: Prof Miriam Bernard

*Apologies: Khim Horton, Suzanne Moffatt, Alisoun Milne*

1	<b>Minutes of the meeting held Tuesday 5<sup>h</sup> July, 2011, Plymouth University</b>	
2	<b>Matters arising</b>	
3	<b>President's Report (Prof Miriam Bernard)</b>	
4	<b>Secretary's Report (Dr Sue Venn)</b>	
5	<b>Treasurer's Report (Dr Kate Bennett)</b> 5.1 Motion: This AGM approves the 2011/12 accounts 5.2 Motion: This AGM approves the re-appointment of Dixie Associates Ltd as the Society's auditor and accountant for the financial year 2012-2013  Accounts – Appendix 1	
6	<b>Reports from Strategy/Task Groups</b>  6.1 Update on the new strategy/task groups (Prof Miriam Bernard) 6.2 Membership & Communications (Dr Sue Venn) - including Social Media Demonstration (Dr Debora Price) 6.3 Publications (Dr Mary Pat Sullivan) 6.4 Conference Liaison & Events (Dr Simon Evans) 6.5 ERA (Dr Debbie Cairns and Naomi Woodspring) 6.6 International Relations (Dr Alisoun Milne) 6.7 Advisory and Lobbying (Prof Miriam Bernard)	
7	<b>Election results</b>	
8	<b>Presentations and Awards</b>  8.1 BSG Outstanding Achievement Award 8.2 Dr Simon Evans, outgoing Chair of Conference Liaison Group 8.3 Dr Kate Bennett, outgoing Treasurer 8.4 Inauguration of incoming Treasurer, Dr Veronika Williams 8.5 Inauguration of incoming President, Professor Robin Means	
9	<b>Any Other Business</b>	
10	<b>Next meeting:</b> This will be held during the Society's annual conference at Oxford, September 11 <sup>th</sup> – 13 <sup>th</sup> 2013.	

## Wednesday 11<sup>th</sup> July 2012 – Paper/Symposium Session 1

Session/Stream Title	Arts and Humanities	Critical Perspectives	Environment and Ageing	Health, Wellbeing and Care
Room and Chair	CBA1.098  Symposium	CBA1.100  Cassandra Phoenix	Westminster Theatre  Symposium	CBA1.081  Gill Mein
14.00–14.20	212 Malcolm Johnson  Meaning and spirituality in later life  Paul Higgs Joanna Walker	93 Chris Gilleard  Sex in later life: from sin to salvation	203 David Sinclair  ILC-UK research and policy showcase "housing and care"  Sally Marie Bamford	188 Diana Kuh  A life course approach to physical capability: findings from the HALCyon research programme
14.20–14.40	Keith Albans	158 Rhiannon Jones  Older women's sexualities: experiences and transitions	Dylan Kneale Jessica Watson	145 David Collis  Reflective accounts of painful episodes/experiences by people who consider themselves to have aged successfully
14.40–15.00		215 Francesca Ghillani  The dynamics of bodily changes and self in older women: a comparative study		111 Amanda Clarke  Chronic pain and later life: 'I try and smile, I try and be cheery.' Older adults' accounts of their encounters with health care professionals
15.00–15.20		219 Wendy Martin  Making connections visible: social connectivity, embodiment and daily life		67 Karen Lowton  Adult survivors of childhood liver transplant: personal narratives of an emerging 'new' ageing population
15.20–15.40		253 Cassandra Phoenix  Photographing physical activity: movement, rhythm and the phenomenology of ageing		80 Gill Mein  Altruism and participation in longitudinal health research? Insights from the Whitehall II Study

## Wednesday 11<sup>th</sup> July 2012 – Paper/Symposium Session 1

Health, Wellbeing and Care	New Ageing Populations/New Approaches	New Ageing Populations/New Approaches	Participation and Engagement	Understanding Dementia
<b>CBA1.077</b>	<b>CBA1.071</b>	<b>CBA1.075</b>	<b>CBA1.079</b>	<b>CBA1.099</b>
<b>Symposium</b>	<b>Symposium</b>	<b>Symposium</b>	<b>Symposium</b>	<b>Hannah Zeilig</b>
<b>105 Samuel Nyman</b>  Physical activity promotion: current issues and developments  <b>Maria Horne</b> <b>Rita Newton</b> <b>Jo C Coulson</b> <b>Christina Victor</b>	<b>77 Dana Rosenfeld</b>  HIV and later life – findings from the HALL study  <b>Jane Anderson</b> <b>Valerie Delpech</b> <b>Genevieve Von Lob</b> <b>Damien Ridge</b> <b>Jose Catalan</b> <b>Memory Sachikonye</b>	<b>210 Alan Lewis</b>  Conditioning demand: older people, diversity and thermal experience  <b>Louis Neven</b> <b>Sam Brown</b> <b>Gordon Walker</b> <b>Wendy Wrapson</b> <b>Patrick Devine-Wright</b> <b>Nicholas Humes</b> <b>Christopher Tweed</b> <b>Ralf Brand</b>	<b>257 Clare Jinks</b>  Patient and public involvement in ageing research  <b>Bernadette Bartlam</b> <b>Sophie Staniszewska</b> <b>Tracey Williamson</b>	<b>26 Elizabeth Peel</b>  "The living death of Alzheimer's"? Representations of dementia in media and carer discourse  <b>117 Jane Robertson</b>  A narrative approach to understanding dementia: perspectives on quality of life among older people with dementia and carers  <b>34 Alison Kirkman</b>  Dementia stories: from invisible to visible?  <b>46 Kritika Samsi</b>  Change and continuity in dementia  <b>33 Hannah Zeilig</b>  Dementia as a cultural metaphor



## Wednesday 11<sup>th</sup> July 2012 – Paper/Symposium Session 2

Session/Stream Title	Arts and Humanities	Critical Perspectives	Environment and Ageing	Health, Wellbeing and Care
Room and Chair	CBA1.098  Jackie Reynolds	CBA1.100  Paul Nash	Westminster Theatre  Sally Keeling	CBA1.081  Mary Gilhooly
<b>16.10–16.30</b>	<b>179 Sharon Wray</b>  To what extent is religion a source of empowerment for older women?	<b>142 Hannah Swift</b>  Give me your money! How stereotypical representations of older people influence donations to charity	<b>199 Sheila Peace</b>  The spatiality of ageing	<b>220 Attracta Lafferty</b>  Experiencing elder abuse: coping strategies adopted by older people
<b>16.30–16.50</b>	<b>159 Anna Goulding</b>  Contemporary visual art and the well-being of older people: policy and practice	<b>104 Ruth Lamont</b>  Growing old and incompetent? The behavioural effects of ageing stereotypes	<b>154 Marjaana Seppänen</b>  Ageing in place and attachment to urban neighbourhoods	<b>44 Kritika Samsi</b>  Preventing financial abuse in dementia
<b>16.50–17.10</b>	<b>73 Jackie Reynolds</b>  Creative ageing: exploring social capital and arts engagement in later life	<b>90 Paul Nash</b>  Internalized ageism: the hidden prejudice	<b>59 Sally Keeling</b>  Re-imagining age-friendly communities during a long-term earthquake recovery process	<b>17 Mary Gilhooly</b>  Detection and prevention of elder financial abuse: applying the bystander intervention framework to understand the role of social care and health professionals

## Wednesday 11<sup>th</sup> July 2012 – Paper/Symposium Session 2

Health, Wellbeing and Care	New Ageing Populations/New Approaches	New Ageing Populations/New Approaches	Participation and Engagement	Understanding Dementia
<b>CBA1.077</b>	<b>CBA1.071</b>	<b>CBA1.075</b>	<b>CBA1.079</b>	<b>CBA1.099</b>
<b>Karen Windle</b>	<b>Anthea Tinker</b>	<b>Penny Miles</b>	<b>Jacquie Eales</b>	<b>Kay De Vries</b>
<b>69</b> <b>Keming Yang</b> Explaining loneliness amongst adults in Europe: a two-level and cross-national study	<b>89</b> <b>Miranda Leontowitsch</b> The role of information and communication technology in later life	<b>240</b> <b>Tung Suen</b> Gay men and the future of care: to what extent are 'families of choice and other life experiments' applicable to characterize gay men's lives in later life?	<b>155</b> <b>Robin Means</b> Exploring connectivity and rural ageing: issues and challenges from the 'Grey and Pleasant Land?' project	<b>66</b> <b>Kay de Vries</b> Emotional responses to observation research in the field of dementia care: ethical and moral considerations
<b>143</b> <b>Arja Kilpeläinen</b> Virtual community diminishing loneliness in rural areas?	<b>250</b> <b>Malcolm Johnson</b> Using social media technologies to extend social inclusion in care homes	<b>112</b> <b>Kathryn Almack</b> Investigating the relational networks of older lesbian, gay and bisexual people in planning for future and end of life care in later life	<b>103</b> <b>Sheelah Connolly</b> The perceived benefits of participating in voluntary activity: do they differ by volunteer characteristics?	<b>118</b> <b>Suzanne Hardy</b> The role of assistive technology for personal care in enabling families to care for relatives with dementia in their location of choice
<b>230</b> <b>Jennifer Francis</b> Preventing loneliness and social isolation	<b>87</b> <b>Anthea Tinker</b> Independence matters: using design and technology to improve quality of life of older people	<b>206</b> <b>Penny Miles</b> Contemplating inclusive and anti-discriminatory residential care provision in Wales: perceptions from older LGB (lesbian, gay, and bisexual) people	<b>150</b> <b>Jacquie Eales</b> "There aren't enough people to volunteer, so they take anybody": is engagement the key to sense of belonging in rural communities?	<b>22</b> <b>Patricia McParland</b> An exploration into how the general public understand and respond to dementia

## Thursday 12<sup>th</sup> July 2012 – Paper/Symposium Session 3

Session/Stream Title	Arts and Humanities	Critical Perspectives	Environment and Ageing	Health, Wellbeing and Care
Room and Chair	CBA1.098  Symposium	CBA1.100  Bernadette Bartlam	Westminster Theatre  Symposium	CBA1.081  Symposium
<b>08.40–09.00</b>	<b>38</b> <b>Miriam Bernard</b>  Theatre, ageing and community memory (1): international perspectives  <b>Anne Basting</b> <b>Michelle Rickett</b>  <b>Janet Fast</b> <b>Susan Feldman</b>	<b>99</b> <b>Peter Lansley</b>  Stimulating ageing research	<b>134</b> <b>Charles Musselwhite</b>  The role of transport and mobility in maintaining independence, health and wellbeing in later life  <b>Sally Edge</b> <b>Ian Shergold</b> <b>Graham Parkhurst</b>	<b>72</b> <b>Jane Richardson</b>  Pain in older people  <b>Fiona MacKichan</b> <b>Ross Wilkie</b> <b>Andrew Moore</b> <b>Kate Lillie</b>
<b>09.00–09.20</b>		<b>129</b> <b>Martin Hyde</b>  Emergent epistemic communities of ageing and later life		
<b>09.20–09.40</b>		<b>39</b> <b>Rosalind Willis</b>  Reflections on being both an insider and an outsider in qualitative research on ethnicity		
<b>09.40–10.00</b>		<b>160</b> <b>Gemma Carney</b>  Towards a grounded theory of intergenerational solidarity in Ireland: critical reflections on methods and methodology		
<b>10.00–10.20</b>		<b>255</b> <b>Bernadette Bartlam</b>  Mixed methods in critical gerontology		



## Thursday 12<sup>th</sup> July 2012 – Paper/Symposium Session 3

Health, Wellbeing and Care	New Ageing Populations/New Approaches	New Ageing Populations/New Approaches	Participation and Engagement	Understanding Dementia
<b>CBA1.077</b>	<b>CBA1.071</b>	<b>CBA1.075</b>	<b>CBA1.079</b>	<b>CBA1.099</b>
<b>Charles Simpson</b>	<b>Kate Bennett</b>	<b>Symposium</b>	<b>June Udell</b>	<b>Simon Evans</b>
<b>260 Cath Brannan</b>  Sustainable homes: what are the benefits of Care and Repair services to the independence and quality of life?	<b>84 Harriet Radermacher</b>  Older women and homelessness: looking beyond global stereotypes to devise local responses	<b>108 Sue Westwood</b>  Lesbian, gay, bisexual and trans ageing (1): research perspectives  <b>Nancy Knauer</b> <b>Brian Heaphy</b> <b>James Taylor</b> <b>Rebecca Jones</b> <b>Jane Traies</b>	<b>79 Emilie Raymond</b>  The rhetoric of participation in policy discourse: toward a new form of exclusion for disabled seniors?	<b>98 Tamara Backhouse</b>  Behavioural and psychological symptoms of dementia (BPSD) and their management – A postal survey to care homes
<b>196 José São José</b>  Opening the "black box" of home care for older people	<b>11 Fiona Carmichael</b>  Women ageing actively: the potential conflict between physical activity and work		<b>31 Jenny Henderson</b>  Loss and bereavement in someone with dementia	<b>36 Kritika Samsi</b>  Everyday independent and joint decision-making by people with dementia and carers
<b>92 Margaret Cook</b>  Reablement – a cultural shift in the practice of paid carers.	<b>213 Atulya Saxena</b>  Women and health: negotiations between self-sacrifice and self-preservation		<b>43 Jane Tooke</b>  A relational approach to the participation of people with dementia	<b>37 Susan Ashton</b>  Experiences of advanced care planning amongst family caregivers of people with advanced dementia.
<b>167 Naomi Jayanetti</b>  Measuring performance in intermediate care: just a pipe dream?	<b>15 Christine Milligan</b>  'Health by stealth'? Addressing the needs of older men through Men in Sheds activity interventions.		<b>28 Gillian Hurst</b>  The health information seeking behaviour of older people: preliminary findings	<b>23 Letje de Rooij</b>  Living with dementia in small-scale and traditional long-term care settings in the Netherlands and Belgium
<b>171 Angela Dickinson</b>  The temporal and spatial nature of falls in acute mental health settings.	<b>54 Kate Bennett</b>  Widowers do have friends: The changing nature of male-to-male friendships		<b>71 Julie Udell</b>  Involving older people in health and social care research: an example from the PEOPLE Project	<b>45 Simon Evans</b>  ALCOVE: sharing knowledge to enlighten healthcare policies in Europe for people living with dementia and their carers

## Thursday 12<sup>th</sup> July 2012 – Paper/Symposium Session 4

Session/Stream Title	Arts and Humanities	Critical Perspectives	Environment and Ageing	Environment and Ageing
Room and Chair	CBA1.098  Symposium	CBA1.100  Symposium	Westminster Theatre  Robin Darton	CBA1.079  Vanessa Burholt
14.00–14.20	40 Miriam Bernard  Theatre, ageing and community memory (2): translating research into performance	245 Thomas Scharf  Critical perspectives on exclusion and inclusion in later life  Norah Keating Chris Phillipson Peter Lloyd-Sherlock Hannah Swift	198 Sheila Peace  Kitchen living : past and present	85 Susan Feldman  Growing older in a foreign land: The importance of identity for rural migrant men
14.20–14.40	Anne Basting Jill Rezzano David Barnet		20 Christine Raiswell  Exploring mealtimes in residential care settings for older people: methodological challenges	243 Athina Vlachantoni  Pensions among older people from ethnic minorities: patterns and prospects
14.40–15.00			106 Ann-Marie Towers  Feeling in control: comparing older people's experiences in different care settings	27 Jasmin Chowdhury  Transitions, ties and temptations: the experiences of first and second generation Bangladeshi women living in Cardiff
15.00–15.20			12 Randall Smith  People, pets and care homes: a story of ambivalence	18 Shona Martin  Safer homes for stroke survivors
15.20–15.40			234 Robin Darton  ASSET: adult social services environment and settings – towards a typology of models of adult social care in housing with care schemes	88 Vanessa Burholt  Imagery and Imaginaries of island identity: older people and migration in Irish small-island communities

## Thursday 12<sup>th</sup> July 2012 – Paper/Symposium Session 4

Health, Wellbeing and Care	Health, Wellbeing and Care	Intergenerational Perspectives	New Ageing Populations/New Approaches	Understanding Dementia
<b>CBA1.081</b>	<b>CBA1.077</b>	<b>CBA1.071</b>	<b>CBA1.075</b>	<b>CBA1.099</b>
<b>Symposium</b>	<b>Ingrid Eyers</b>	<b>Symposium</b>	<b>Symposium</b>	<b>Symposium</b>
<b>237</b> <b>Jan Oyebode</b>  Free to care? Contextual influences on caregiving  <b>Hareth Al-Janabi</b> <b>Fiona Carmichael</b> <b>Karan Jutlla</b> <b>Jo Ward-Brown</b> <b>Amy Elliott</b> <b>Gerry Riley</b>	<b>221</b> <b>Nick Smith</b>  Measuring outcomes in care homes using ASCOT  <b>75</b> <b>Sarah Stone</b>  The Older People's Commissioner for Wales' review of the advocacy arrangements for older people in care homes in Wales, UK  <b>233</b> <b>Nat Lievesley</b>  Managing and administering medication in care homes for older people  <b>8</b> <b>Helen Pryce</b>  Hearing in residential care settings  <b>202</b> <b>Ingrid Eyers</b>  The senses at night: an insight into English care home residents experiences	<b>261</b> <b>Alan Hatton-Yeo</b>  International perspectives on Intergenerational relationships  <b>Valerie Kuehne</b> <b>Susan Feldman</b> <b>Sarah Wellard</b>	<b>166</b> <b>Sue Westwood</b>  Lesbian, gay, bisexual and trans ageing (2): rights and advocacy  <b>Mark Hughes</b> <b>Andrew King</b> <b>Lee-Ann Fenge</b> <b>Antony Smith</b>	<b>24</b> <b>Pauline Banks</b>  Development, delivery and evaluation of a training programme to prepare the NHS and Social Services Dementia Champions in Scotland  <b>Anna Waugh</b> <b>Barbara Sharp</b> <b>Jenny Henderson</b> <b>Margaret Brown</b> <b>Jo Oliver</b> <b>Angela Kydd</b>



## Thursday 12<sup>th</sup> July 2012 – Paper/Symposium Session 5

Session/Stream Title	Arts and Humanities	Critical Perspectives	Environment and Ageing	Health, Wellbeing and Care
Room and Chair	CBA1.098  Lucy Munro	CBA1.100  Amanda Grenier	Westminster Theatre  Symposium	CBA1.081  Symposium
16.40–17.00	139 <b>Catherine Bailey</b> Using cinema and film to explore ageism across the generations: a small pilot	122 <b>Ludwig Amrhein</b> "Age" is just a word	267 <b>Chris Phillipson</b> Constructing age-friendly communities: critical perspectives  <b>Tine Buffel</b> <b>Liesbeth De Donder</b> <b>Sarah Dury</b>	148 <b>Sue Davies</b> Conducting health care research with care homes: three sides of the same story – care home, researcher and primary health care perspectives
17.00–17.20	35 <b>Ruth Basten</b> The circle of life: nice girls round the corner	91 <b>Chris Gilleard</b> Generations: compacts, conflicts and changes	<b>Nico De Witte</b> <b>An-Sofie Smetcoren</b> <b>Dominique Verté</b> <b>Mo Ray</b> <b>Sally Chandler</b>	<b>Sarah Amador</b> <b>Christina Victor</b> <b>Claire Goodman</b> <b>Angela Dickinson</b> <b>Helen Masey</b> <b>Steve Iliffe</b>
17.20–17.40	208 <b>Rebecca Johnson</b> Evidence for intergenerational engagement: a case study of 'On Aging', a devised theatrical performance	70 <b>Cynthia Meersohn-Schmidt</b> Transitions from midlife to old age: steering mismatching expectations		
17.40–18.00	55 <b>Sally Chivers</b> "There's a reason we're here": an archival analysis of community-based intergenerational theatre	64 <b>Amanda Grenier</b> Moving beyond fixed forms: rethinking transition in late life		
18.00–18.20	116 <b>Lucy Munro</b> Documentary theatre and the place of ageing: representation and the role of the archive			

## Thursday 12<sup>th</sup> July 2012 – Paper/Symposium Session 5

Health, Wellbeing and Care	Health, Wellbeing and Care	Intergenerational Perspectives	Participation and Engagement	Understanding Dementia
<b>CBA1.077</b>	<b>CBA1.075</b>	<b>CBA1.071</b>	<b>CBA1.079</b>	<b>CBA1.099</b>
<b>Liz Lloyd</b>	<b>Roger Beech</b>	<b>Vanessa Burholt</b>	<b>Symposium</b>	<b>Alison Bowes</b>
<b>197</b> <b>Rebekah Luff</b> Teamwork amongst care home staff and responses to challenging situations	<b>29</b> <b>Ilana Crome</b> Our invisible addicts – a report of the Royal College of Psychiatrists	<b>170</b> <b>Xiayang Liu</b> Perceptions of ageing among UK's Chinese older people and their families – the implications for culturally sensitive services	<b>200</b> <b>Alan Walker</b> Involving older people in research: experiences from the New Dynamics of Ageing programme  <b>Michael Murray</b> <b>Sarah Howson</b> <b>Lorna Warren</b> <b>Mary Sinfield</b>	<b>153</b> <b>Alan Wright</b> Connecting with the world through physical activity: an exploration of the perceptions and experiences of people with dementia
<b>63</b> <b>Kate Thompson</b> Improving the fairness and sustainability of the care home funding system in England	<b>120</b> <b>Amy Bennion</b> Living together with age related macular degeneration: an interpretative phenomenological analysis	<b>25</b> <b>Patricia O'Neill</b> The new filial piety: implications for Chinese daughters and elderly parents		<b>226</b> <b>Maria Parsons</b> Not just for art's sake: promoting quality of life for older people with dementia through creative arts
<b>183</b> <b>Christian Beech</b> The closure of care homes for older people in Wales: recommendations and amendments to statutory guidance	<b>229</b> <b>Kathleen Lane</b> Age is no barrier to the expertise of stroke survivors	<b>254</b> <b>Jeffrey Ahmed</b> Terminal care for Muslim patients with end-stage dementia: a cultural and family-centric approach		<b>224</b> <b>Ailsa Cook</b> Implementing outcomes focussed approaches with people with dementia: lessons from the Talking Points Programme
<b>246</b> <b>Liz Lloyd</b> It's a scandal! comparing the causes and consequences of public outrage over conditions in care homes in five national settings	<b>223</b> <b>Roger Beech</b> Getting evidence into practice: an intervention to optimize primary care professionals' use of evidence-based care for COPD	<b>94</b> <b>Vanessa Burholt</b> The prevalence of inter- and intra-generational informal care within six black and minority ethnic groups living in England and Wales		<b>251</b> <b>Alison Bowes</b> A mobile therapy unit for older people diagnosed with dementia: the Brain-bus

## Friday 13<sup>th</sup> July 2012 – Paper/Symposium Session 6

Session/Stream Title	Arts and Humanities	Critical Perspectives	Environment and Ageing	Health, Wellbeing and Care
Room and Chair	CBA1.098  Symposium	CBA1.100  Symposium	Westminster Theatre  Thomas Scharf	CBA1.081  AGE UK Symposium
08.40–09.00	181 Jan Baars  Ethical reflections on life style, self-realization and existential meanings in late modern ageing	241 Wendy Martin  Gendered ageing: critical perspectives, future challenges – roundtable  Toni Calasanti Neal King Ian Rees Jones Clary Krekula Debora Price	180 Wendy Wrapson  'I'm not moving again': older adults' perceptions about living in their current home when they are older and frailer	268 James Goodwin  Social care, who cares?  Matthew Norton Jose Iparraguirre
09.00–09.20	Joseph Dohmen Hanne Laceulle Peter Derkx		121 An-Sofie Smetcoren  Push and pull factors for moving at old age	
09.20–09.40			16 Louise Hynes  So much choice? Women's decision-making and the move to a retirement village in Australia	
09.40–10.00			57 Thomas Scharf  How age-friendly are purpose-built retirement communities? Towards a conceptual and empirical understanding of age-friendliness	

## Friday 13<sup>th</sup> July 2012 – Paper/Symposium Session 6

Health, Wellbeing and Care	Health, Wellbeing and Care	New Ageing Populations/ New Approaches	Participation and Engagement	Understanding Dementia
<b>CBA1.077</b>	<b>CBA1.071</b>	<b>CBA1.075</b>	<b>CBA1.079</b>	<b>CBA1.099</b>
<b>Symposium</b>	<b>Deborah Cairns</b>	<b>Symposium</b>	<b>Symposium</b>	<b>Symposium</b>
<b>114</b> <b>Anthony Chiva</b>  What is the role of holistic spirituality in positive ageing and health?	<b>100</b> <b>Louise Yuen Ming Wong</b>  Preparing for end of life among Manchester Chinese community  <b>161</b> <b>Christine Dobbs</b>  Place of death and space for death? End-of-life-care for the dying older patient and their older loved ones.  <b>65</b> <b>Kay de Vries</b>  Morale and Spirituality in care homes in the UK and NZ: analysis of interviews collected using questionnaires  <b>60</b> <b>Deborah Cairns</b>  Bridging the gap between policy and practice: dignity in care for older people	<b>189</b> <b>Ruth Naughton-Doe</b>  Innovation in meeting the social care needs of older adults: exploring the case of time banking, with examples from the UK and Japan.  <b>Keith Sumner</b> <b>Mayumi Hayashi</b>	<b>126</b> <b>Lizzie Ward</b>  Participation and beyond: ways of understanding the impact and value of older people's involvement in ageing research  <b>Jill Bindels</b> <b>Rosemary Littlechild</b> <b>Denise Tanner</b> <b>Mo Ray</b>	<b>30</b> <b>Peter Crome</b>  National Audit of Dementia: key results and recommendations  <b>Rosemary Wooley</b> <b>Chloe Hood</b>



## Friday 13<sup>th</sup> July 2012 – Paper/Symposium Session 7

Session/Stream Title	Arts and Humanities	Critical Perspectives	Environment and Ageing	Environment and Ageing
Room and Chair	<b>CBA1.098</b>  <b>Gill Windle</b>	<b>CBA1.100</b>  <b>Robin Means</b>	<b>Westminster Theatre</b>  <b>Ann O’Hanlon</b>	<b>CBA1.099</b>  <b>Susan Venn</b>
<b>10.30–10.50</b>	<b>110 Matt Connell</b>  Talking about old records: generational musical identity among older people	<b>204 Debora Price</b>  Financial capability, housing equity, and the politics of income in later life	<b>216 Kieran Walsh</b>  Age-related rural social exclusion: a framework	<b>51 Naomi Woodspring</b>  It's all life: ageing bodies and the postwar generation
<b>10.50–11.10</b>	<b>123 Claire Garabedian</b>  "I'd rather have music": impacts of music for people with dementia approaching the end of life and their carers	<b>132 Mel Wright</b>  Tensions in grass-roots practice: some issues in the work of Kilburn Older Voices Exchange (2001 to the present)	<b>61 Pauline Banks</b>  Promotion of wellbeing amongst isolated older adults in deprived urban and rural areas	<b>58 Deborah Morgan</b>  Transitions in loneliness and social isolation
<b>11.10–11.30</b>	<b>101 Gill Windle</b>  Participation in community arts for the health and well-being of people with dementia, their carers, and the communities in which they live – implications for research, policy and practice	<b>19 Robin Means</b>  Big Society, civic engagement and older people: historical and contemporary perspectives	<b>222 Ann O’Hanlon</b>  Loneliness and perceptions of age friendliness among community based older adults	<b>190 Susan Venn</b>  Lifestyle aspirations in retirement: implications for environmental sustainability

## Friday 13<sup>th</sup> July 2012 – Paper/Symposium Session 7

Health, Wellbeing and Care	Health, Wellbeing and Care	Intergenerational Perspectives	New Ageing Populations/New Approaches	Participation and Engagement
<b>CBA1.081</b>	<b>CBA1.077</b>	<b>CBA1.071</b>	<b>CBA1.075</b>	<b>CBA1.079</b>
<b>Bridget Penhale</b>	<b>Athina Vlachantoni</b>	<b>Alan Hatton-Yeo</b>	<b>Leela Damodaran</b>	<b>Andrew Jenkins</b>
<b>205</b> <b>Amanda Phelan</b>  Approaches to screening older people for elder abuse	<b>83</b> <b>Goetz Ottmann</b>  Building resilience in older age: summary of findings of a qualitative project involving 30 older people and carers	<b>157</b> <b>Robin Mann</b>  The role of grandparents within Italian transnational families in South Wales	<b>191</b> <b>Jatinder Sandhu</b>  Learning and sustaining use of ICTs by older people: identifying the barriers	<b>48</b> <b>Anthea Tinker</b>  An intercalated BSc in Gerontology: a critical account.
<b>242</b> <b>Anne Killett</b>  Organizational dynamics of respect and elder care	<b>86</b> <b>Utae Mori</b>  Japan's male carers: confronting the realities	<b>217</b> <b>Anna Tarrant</b>  Exploring gendered constructions of age: the social geographies of grandfatherhood	<b>228</b> <b>Shizuka Abe</b>  Ageing populations in the information age: the experiences, perspectives and needs of ICTs in Japan	<b>115</b> <b>Ben Chi-pun Liu</b>  The mediating effect of age on lifelong education and self-efficacy
<b>113</b> <b>Bridget Penhale</b>  Mind the gap – improving criminal justice agencies and social support agencies responses to intimate partner violence against older women	<b>49</b> <b>Athina Vlachantoni</b>  Round-the-clock carers: who are they and how are they faring?	<b>262</b> <b>Alan Hatton-Yeo</b>  A UK perspective on intergenerational practice	<b>235</b> <b>Leela Damodaran</b>  Emergence of a user-generated strategy for future community-based ICT training and support	<b>146</b> <b>Andrew Jenkins</b>  Educational trajectories and wellbeing: a lifecourse perspective

## BSG2012 POSTER PRESENTATIONS

The posters at this year's BSG Conference will be displayed in the following order. The number preceding the name is the abstract ID number and will be displayed on the poster.

Posters will be available for viewing throughout the conference in the Exhibition Suite during refreshment breaks and lunches

### Arts & Humanities

- |                      |   |
|----------------------|---|
| 244 – Cross, Joanna  | From the Beautiful to the Visceral: The Significance of Aesthetics in the Care of Older People. |
| 209 – Phelan, Amanda | Examining newspaper Reports of care in a nursing home: A discursive analysis                    |

### Environment & Ageing

- |                           |   |
|---------------------------|---|
| 127 – Harjes, Anne        | 'I want to go home' Desires and Realities Experienced by Ageing German Migrants                                   |
| 239 – O'Hanlon, Ann       | The Louth Age-Friendly Communities Survey: a multidimensional instrument for assessing levels of age-friendliness |
| 256 – Bartlam, Bernadette | Making and re-making home in a purpose-built retirement village   |
| 269 – Liddle, Jennifer    | Four contrasting experiences of life in a purpose-built retirement village  |

### Health, Wellbeing & Care

- |                          |  |
|--------------------------|--|
| 271 – Collins, Jill      | Investigation of Healthy Ageing in ExtraCare Villages and Schemes  |
| 270 – Phoenix, Cassandra | "Physical Activity Among Older People with Sight Loss: A Qualitative Research Study to Inform Policy and Practise" |
| 238 – Watson, Jessica    | Targeting low awareness of undetected visual impairment and sight loss in care homes                               |
| 211 – Webber, Sarah      | An Ethic of Care Critique of Social Care Assessment  |
| 192 – Willis, Rosalind   | The ASC Project: Acceptability of and satisfaction with social care among South Asian groups                       |
| 140 – Gage, Heather      | How do care home managers describe working with primary care? A National Survey                                    |
| 128 – Dosch, Erna        | Role Reversal: Husbands and Sons as Caregivers   |
| 74 – Stone, Sarah        | Dignified care? The experiences of older people in hospital in Wales   |
| 248 – Masumi, Muramatsu  | Relationship between subjective well-being and self-assessed masticatory ability among the elderly in Japan        |

169 – Narayanan, Venkat	Falls screening and assessment tools used in acute mental health settings: An analysis of policies in England and Wales.
141 – Bunn, Frances	Preventing falls among older people with mental health problems: a systematic review
152 – Mohd Amin, Rahmah	Family related factors as a risk for default of depression treatment among elderly: a case control and exploratory study in Malaysia.
109 – Sullivan, Mary Pat	Use as Abuse: A Feasibility Study of Alcohol-related Elder Abuse and Neglect
214 – Phelan, Amanda	Financial Abuse of Older people
266 – Ash, Angie	Seeing is Believing? Elder mistreatment, social workers and the cognitive mask
135 – Barron, Evelyn	Towards a consensus definition of healthy ageing: A systematic literature review of cohort studies
131 – Barron, Evelyn	Blood-borne biomarkers of mortality: A systematic literature review of prospective cohort studies
144 – Victor, Christina	Temporal Aspects of Loneliness in Older People
162 – Wealleans, Lynne	Evidence based model of a life course approach to promote positive ageing

## **New Ageing Populations/New Approaches**

263 – Ray, Mo	Ageing without children: understanding the implications in older age
184 – Gale, Deborah	Career Resumption for Educated Baby Boomer Mothers: an Exploratory Study
236 – Najork, Christopher	Age and Gender: using new media in the context of the German Media-Analyse (MA) by people age 50plus
156 – Hillcoat-Nalletamby, Sarah	Care in Business

## **Participation & Engagement**

62 – Dury, Sarah	Volunteering among older adults: Differences in terms of individual characteristics
107 – de Donder, Liesbeth	Social participation of older people: individual determinants and barriers
185 – Stumbitz, Bianca	The Benefits of Social Entrepreneurial Activity in Later Life

## Understanding Dementia

119 – McFarlane, Helen	Five Dementia Friendly Parishes Innovation in Devon Rural Communities
176 – Smith, Veronica	Community pharmacists and people with dementia: reflections on ethical and governance procedures
177 – Smith, Veronica	Community pharmacists and people with dementia: issues and developments



## INVITATION TO AN EXHIBITION OF CURRENT VISUAL RESEARCH



Visual Methods are increasingly being used within ageing research. Exploring the visual is seen as a means to uncover significant insights into how micro processes of daily life are linked to wider socio-cultural disorders; the performative aspects of culture often hidden within the everyday; to make visible the taken-for-granted; to stimulate debate; and to reveal meanings and understandings in context. The aim of this exhibition is to bring together researchers using methods within their research; and to focus on the contribution of visual data to wider representations and contexts within ageing research.

The following researchers are presenting their visual research:

**Wendy Martin** (Brunel University): **Photographing everyday life: ageing, bodies, time and space**

**Sukey Parnell** (University of West London) **Women of an Uncertain Age and Late Developers**

**Cassandra Phoenix & Noreen Orr** (Peninsula College of Medicine and Dentistry): ***Moving Stories: Physical Activity and Ageing***

**Lorna Warren** (University of Sheffield): **LOOK AT ME! Images of Women and Ageing**

We invite you to participate in this exhibition of visual research and hope that it will stimulate some interesting discussion around its possibilities and use within ageing research.

**Co-ordinated by Dr Wendy Martin** (Brunel University): [wendy.martin@brunel.ac.uk](mailto:wendy.martin@brunel.ac.uk)



*Photographs published with permission of the photographers*

## PLENARY SPEAKER BIOGRAPHIES



### **Toni Calasanti**

Toni Calasanti, PhD, is Professor of Sociology at Virginia Tech in the USA, where she is also a faculty affiliate of both the Center for Gerontology and Women's and Gender Studies. She is co-author of *Gender, Social Inequalities, and Aging* (Altimira Press, 2001) and co-editor of *Age Matters: Re-Aligning Feminist Thinking* (Routledge, 2006) (both with Kathleen Slevin), and co-editor of *Nobody's Burden: Lessons from the Great Depression on the Struggle for Old-Age Security* (Rowman and Littlefield, 2011) (with Ruth Ray), and has published in such journals as *The Gerontologist*; *Journal of Gerontology: Social Sciences*; *Social Forces*; *Journal of Aging Studies*; and *Men and Masculinities*. Her recent work focuses on age and gender in relation to spousal carework; ageing bodies and the anti-ageing industry; middle-aged bodies and doing age; and masculinity and health.

*Professor Calasanti is speaking on Wednesday 11<sup>th</sup> July at 12.50. She will present on 'Different or Unequal? Considering Power Relations.'*



### **Murna Downs**

Murna Downs, PhD, is Professor in Dementia Studies and Head of the Bradford Dementia Group at the University of Bradford, England. In addition to writing peer-reviewed publications, she co-edited the textbook *Excellence in Dementia Care: research into practice* (McGraw-Hill, 2008), co-authored *Living and Dying with Dementia: dialogues about palliative care* (Oxford University Press, 2007) and co-edited *The Futures of Old Age* (Sage, in association with the British Society of Gerontology, 2006). She edits the Bradford Dementia Group Good Practice Guides on Dementia, published by Jessica Kingsley. Her research interests include the experience of living with dementia, innovative methodology and development, and evaluation of care practice and services. Recently completed and ongoing collaborative work focuses on reducing avoidable admission from care homes to hospitals for people with dementia; an evaluation of memory services from the perspective of people with dementia and their families; and an observational study of awareness and dementia.

*Professor Downs is speaking on Thursday 12<sup>th</sup> July at 10.50. She will present on 'From Invisible Patient to Citizen and Activist: Dementia Comes of Age'.*

## PANEL SPEAKER BIOGRAPHIES

*The Panel is speaking on Friday 13th July at 11.40. They will present on 'The Future of Ageing Research'*



### **Sally-Marie Bamford**

Assistant Director of Research and Strategy  
The ILC-UK

Sally-Marie Bamford joined the ILC-UK in March 2009 and has worked on a number of high profile research and policy projects, including for the Joseph Rowntree Foundation, Age UK and the Department of Health. Prior to joining the ILC-UK, Sally-Marie held a variety of posts in the charity and political sector, researching and writing on social care, workforce development and equality and human rights. She worked for several years in the European Parliament as a political advisor, was a speech writer at the Equality and Human Rights Commission and has particular interests in equality and human rights for older people, dementia and older people with high support needs. This year Sally-Marie will be working on projects including dementia and prevention and health seeking behaviour across the generations. She has a Masters in social policy and research and is a qualified NCTJ accredited journalist.



### **Mark Gorman**

Director of Strategic Development  
HelpAge International

Mark Gorman joined HAI in 1988 as Development Officer, the first full-time staff appointment made by the organisation. Subsequently he became Deputy Chief executive between 1991 and 2007. Prior to coming to HAI he worked for development agencies with programmes in Africa, Asia and Latin America. He started his career in 1973 as an Education Officer working for the North-Eastern State Government of Nigeria, and subsequently worked for Voluntary Service Overseas as programme coordinator in Nigeria. After gaining a first degree in History at Cambridge University he trained as a teacher at the University of London. He holds Masters Degrees from Cambridge and Bristol Universities, the latter in Education in Developing Countries. He has published a number of articles on aspects of ageing in the developing world and was awarded an MBE in the Queen's New Year's Honours List 2008.





## **Philippa Hare**

Programme Manager

The Joseph Rowntree Foundation

Philly Hare has been with JRF since 2006. She currently oversees two programmes within the 'Ageing Society' theme. The first, 'A Better Life', (managed jointly with Ilona Haslewood), explores what needs to change so that older people, especially those with high support needs, can have 'a better life'. A number of strands focus on defining what makes 'a better life'; improving residential and nursing care (in partnership with My Home Life); housing with care schemes; and 'alternative approaches'. The second, 'Dementia and Society', explores how we all should and can adjust to dementia in the future; and how we can ensure that the voice and experiences of different people with dementia shape the policy and practice decisions that affect their lives. As a qualified social worker, Philly has experience in many areas of adult social care and she spent five years as Senior Researcher with the independent consultancy, Acton Shapiro, prior to joining JRF. She has a first degree in English and Philosophy (Exeter) and an MSc in Applied Social Studies (Oxford).



## **Peter Lansley**

Professor of Construction Management

University of Reading

Since 1997 Peter Lansley has been advising research councils, charities, professional bodies and the UK government on the development of national research programmes concerned with the needs of older and disabled people. He has guided the EPSRC EQUAL initiative, has directed the EPSRC/BBSRC funded SPARC Programme and until recently co-directed KT-EQUAL. Peter has published widely on organisational behaviour, human performance, the management of change, the organisation of ageing research and assistive technology, in which he has a particular interest. He has received several awards for his work in the fields of innovation and inclusive design as well as for championing the role of the occupational therapist. Although he "retired" from the University of Reading in September 2011 he is actively involved with ageing research and older people's issues as well as with *Management Reality*, an international management consulting and training organisation which he established in 1984.

## AFTER DINNER SPEAKER BIOGRAPHIES

### The Vice-Chancellor

**Professor Nick Foskett, MA, PhD, PGCE, FRGS, FRSA**



Professor Nick Foskett has been Vice-Chancellor of Keele University since August 2010. Previously he was Dean of the Faculty of Law, Arts and Social Sciences at the University of Southampton, where he was also Professor of Education and, previously, Head of the School of Education.

Professor Foskett's academic expertise lies broadly in the field of educational policy and leadership, with a particular focus on higher education and further education. His internationally recognised research has considered a number of specific themes:

- The marketisation of education
- Educational and career choice processes by young people, including the nature and impact of the funding of students in HE
- Widening participation
- The management and leadership of Schools, Colleges and Universities
- The interface of government policy and the management of educational institutions
- The internationalisation of higher education
- Capacity building in Universities in the developing world

His work in these fields has included many national and international invitations as a keynote speaker, and work as a consultant to government both in the UK and overseas and on the development of policy in fields such as HE fees, widening participation and educational careers advisory systems. This has led to strong international links in Australia, China and the countries of southern Africa. He has been joint Editor of the Commonwealth's journal in the field of educational leadership, *International Studies in Educational Administration*.

Professor Foskett is a Geographer and Environmental Scientist by background, and after graduating from Oxford University he taught Geography and Geology in secondary schools and sixth form colleges before his career took him into higher education. He still retains a strong interest and engagement in environmental issues and sustainability, and continues to publish and research on the nature and role of field studies, outdoor activities and education for sustainability within primary, secondary and tertiary education.



## Dr Alan Hatton-Yeo

*Chief Executive, Beth Johnson Foundation*



Alan Hatton-Yeo, Chief Executive of the Beth Johnson Foundation, has received an honorary degree of Doctor of the University in recognition of his significant contribution to the work on ageing and intergenerational relationships across the UK, and internationally, and his longstanding links with Keele University.

Alan worked in the field of special education for seventeen years with roles including College Principal and Principal Education Officer of the then Spastics Society for England and Wales. Following a period working with the British Red Cross he joined the Beth Johnson Foundation as Chief Executive in March 1998.

The Foundation was established in 1972 to develop new approaches to ageing that link practice, policy and research. Currently its work includes specialist work around advocacy for people with dementia, health promotion for older people, mid-life, volunteering, engagement and participation and intergenerational work. Alan has an international reputation for his work in the fields of Intergenerational Practice and Ageing and his current roles include:

- Director of the Centre for Intergenerational Practice
- Chair of the International Consortium for Intergenerational Programmes
- Strategic lead for the Welsh Assembly Government on Intergenerational Practice
- Member UK Advisory Forum on Ageing
- Member Steering Group Age Action Alliance
- Member National Partnership Forum for Older people for Wales
- Co-Chair Age Action Alliance Working Group on Age Friendly Environments
- Honorary Research Fellow University of Keele
- Associate Editor Journal for Intergenerational Relationships

## LINKED EVENTS

### Attention Social Workers with Older People

**Breakfast Discussion on Thursday 12<sup>th</sup> July between 08.10 – 10.20**

#### **In Room CBA0.72 / 73 Chancellor's Building**

The G8 (gerontological social work special interest group) invites social workers for breakfast and a discussion on the future agenda for gerontological social work research. The gerontological social work special interest group formed two years ago and has a membership\* of social work academics all passionate about raising the profile of social work with older people – in research, in practice and in continuous professional/practice development. Over the past two years, we have hosted symposia on the theme of social work with older people at BSG and this year, we felt it was timely to invite social workers for an open discussion and exploration about research in social work and the wider issue of the raising the profile and visibility of social work with older people.

The meeting will be from 08.10 to 10.20 in room CBA1 072/073 in the Chancellor's Building (the site of the conference) and a continental breakfast and tea/coffee and juice will be provided.

Why not come and join us? We very much look forward to meeting you.

\*G8 membership: Mary Pat Sullivan (Brunel University); Judith Phillips and Christian Beech (Swansea University); Denise Tanner (Birmingham University) Alisoun Milne (University of Kent); Sally Richards (Oxford Brookes University); Liz Lloyd (Bristol University); Mo Ray (Keele University).

### The UK Urban Ageing Consortium

A new collaborative partnership between Keele University, Manchester City Council and the Beth Johnson Foundation is being launched at BSG. The new UK Urban Ageing Consortium will provide a unique, national focus for the development of age-friendly environments.

Building on the combined expertise of its three partners, the Consortium will act as a useable resource for sharing and developing learning around 'age-friendly' cities, advancing both practice and debate on urban ageing.

To find out more please join us for the official launch of the Consortium on Thursday 12 July as part of the Environment and Ageing Symposium. Following on from symposium presentations providing critical perspectives on Age-Friendly Communities, the Consortium will be introduced by partners at Manchester City Council and the Beth Johnson Foundation. To be followed by drinks.

All welcome.

Venue: Westminster Theatre, Chancellor's Building  
Time: 16:40 - 18:20



## **The Ages & Stages Theatre Company**

presents

### ***'Our Age, Our Stage'***

The *Ages and Stages* project is a collaboration between Keele University and the New Vic Theatre, Newcastle-under-Lyme. We have been exploring the Victoria Theatre's famous social documentaries – produced between the 1960s and the 1990s - and talking to older people about what part the theatre has played in their lives.

Our new social documentary performance – *'Our Age, Our Stage'* - brings older participants from the project together with members of the New Vic's Youth Theatre. It explores ageing, intergenerational relations and the role the theatre has played – and continues to play - in the creative life of the people of Stoke-on-Trent and North Staffordshire.

*'Our Age, Our Stage'* is a verbatim production - all the words spoken during the performance are taken from our workshops and interviews with audience members, volunteers, employees, and sources for the Vic's famous documentaries like 'Fight For Shelton Bar', 'Nice Girls', 'Dirty Hill' and 'Miner Dig the Coal'. The documentary will retell some of the many stories that local people have told us about their experiences at the Vic, their love of theatre, and their own ageing and creativity. The hour-long performance will be followed by a question and answer session with the cast, crew and research team.

Project website:

[www.keele.ac.uk/agesandstages](http://www.keele.ac.uk/agesandstages)



## CONFERENCE SPONSORSHIP

The BSG2012 organising committee would like to personally thank all the sponsors of this year's event for their kind generosity and support. It is a pleasure to acknowledge the sponsorship and support from the following organisations.



### Age UK

Age UK is proud to be sponsoring the British Society of Gerontology conference. We are working for a better life today and tomorrow and are the only organisation in the UK that funds charitable research that focuses exclusively on issues related to age. Our research supports Age UK's vision of a world in which older people flourish. Find out more about our work from Professor James Goodwin, Head of Research for Age UK at 7.15pm, Thursday 12th July, Keele Hall or come and visit us in the exhibition hall.

[www.ageuk.org.uk/professionals](http://www.ageuk.org.uk/professionals)

### Beth Johnson Foundation

The **Beth Johnson Foundation** is a leading national voluntary organisation that seeks to make a positive impact on the lives of older people, to gain recognition for the valuable role older people play, and to challenge age discrimination through pioneering initiatives that bring together research, policy and best practice.

We are delighted that the Beth Johnson Foundation are sponsoring the High Tea on Wednesday 11<sup>th</sup> July at 17.15 which is being held in the Comus Restaurant.

[www.bjf.org.uk](http://www.bjf.org.uk)

### Keele University

We would like to thank Keele University for co-hosting the British Society of Gerontology Conference 2012.

[www.keele.ac.uk](http://www.keele.ac.uk)



### The Policy Press

We are delighted that Policy Press are launching a series of books from their Ageing and Lifecourse series on Thursday 12<sup>th</sup> July at 15.40 and sponsoring the 'Special' Tea break.

[www.policypress.co.uk](http://www.policypress.co.uk)

## **EXHIBITION INFORMATION**

There will be an exhibition running alongside the main conference programme and we are pleased to welcome a range of stands which include both publishers from within the field of gerontology as well as a number of organisations that offer valuable support to older people. Please don't forget to show your support by visiting the stands in the exhibition suite and foyer during the refreshment breaks.

The BSG2012 organising committee would like to thank our exhibitors for supporting this year's conference.

**AGE UK**

**AGE Cymru**

**Atlas.ti - DVD Screening**

**British Society of Gerontology**

**Cambridge University Press**

**Centre for Social Gerontology, Keele University**

**Centre for Policy on Ageing**

**Emerald Group Publishing**

**International Longevity Centre - UK**

**Oxford University Press**

**The Beth Johnson Foundation**

**The Mental Health Foundation**

**The Policy Press**

**Thomas Pocklington Trust**



Age UK is the only organisation in the UK that funds charitable research that focuses exclusively on issues relating to age. Our research supports Age UK's vision of a world in which older people flourish.

We fund a broad portfolio of high quality research on ageing, focusing on research with a high potential for knowledge translation and research impact. The theme of our current £1million grant round is Health and Wellbeing, the awards will be announced later this year. Age UK is interested in forming research partnerships to generate funding, develop relationships with users including older people themselves and forming opportunities to translate research findings into tangible benefits for older people.

**Find out more about our work from Professor James Goodwin, Head of Research for Age UK at the drinks reception 7.15pm, Thursday 12 July, Keele Hall.**

We shall also be hosting the following symposium:

**Friday 13 July, 08.40 – 10.00**

Care in Crisis chaired by Dr Matthew Norton, Social and Economic Research Manager, Age UK  
Social care is not fit for purpose. Many of those who need help and support do not get high-quality services, while others who are in significant need are being left to fend for themselves. Two widely anticipated reports setting out proposals for care reform have been published: the Law Commission on the legislative framework for care and the Commission on Funding of Care and Support led by Andrew Dilnot (the Dilnot Commission). This symposium will examine data from economic modelling and government statistics to examine the financial crisis in social care and the Government's response to this in the forthcoming White Paper.

**Age UK papers include:**

**Wednesday 11<sup>th</sup> July, 16:10 - 16:30**

Give me your money! How stereotypical representations of older people influence donations to charity.

Hannah Swift, University of Kent

**Wednesday 11<sup>th</sup> July, 16:30 - 17:50**

Growing Old and Incompetent? The Behavioural Effects of Ageing Stereotypes

Ruth Lamont, University of Kent, Co-authored  
by Hannah Swift, Dominic Abrams

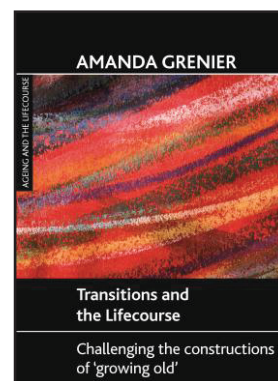
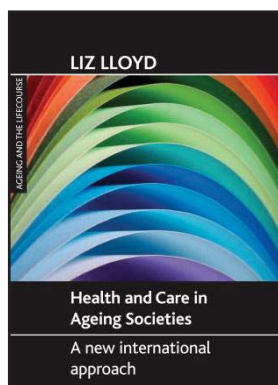
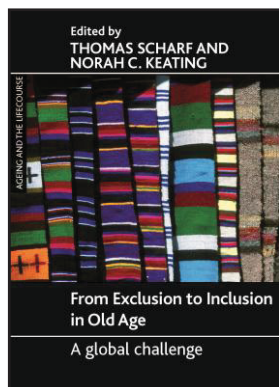
**Please also come along and visit us  
at our exhibition stand, we would be  
delighted to see you.**

**[www.ageuk.org.uk/professionals](http://www.ageuk.org.uk/professionals)**

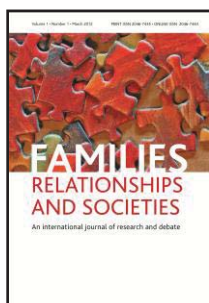
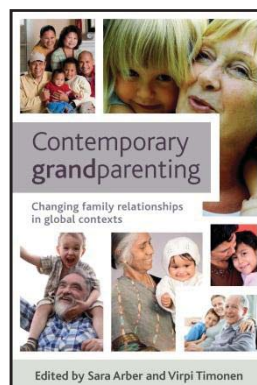
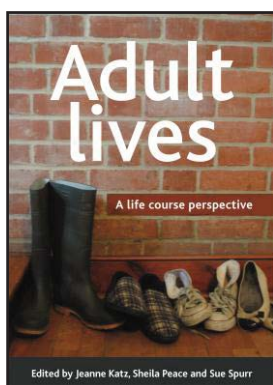
Age UK is a charitable company limited by guarantee and registered in England (registered charity number 1128267 and registered company number 6825798). The registered address is 207–221 Pentonville Road, London N1 9UZ. Age Concern England (registered charity number 261794) and Help the Aged (registered charity number 272786), and their trading and other associated companies merged on 1 April 2009. Together they have formed the Age UK Group, dedicated to improving the lives of people in later life. The three national Age Concerns in Scotland, Northern Ireland and Wales have also merged with Help the Aged in these nations to form three registered charities: Age Scotland, Age NI and Age Cymru.

The Policy Press are delighted to sponsor the afternoon tea break on Thursday 12<sup>th</sup> July to celebrate the publication of the following new titles:

**Titles from our Ageing and the Lifecourse Series:**



**Recently released titles:**



**Families, Relationships and Societies, our new journal**

New in 2012, with three issues per annum, Families, Relationships and Societies is a new social science journal designed to advance scholarship and debate in the growing field of families and relationships across the life course.

Alison Shaw and Emily Watt look forward to meeting you and welcoming you to our stand.

For more information about all of our titles and a 20% discount visit our website [www.policypress.co.uk](http://www.policypress.co.uk). To keep in touch, follow us on Twitter @policypress, find us on Facebook: [The Policy Press](#) or visit our blog <http://policypress.wordpress.com>

# Lifelong Health and Wellbeing (LLHW)

Lifelong Health  
& Wellbeing

Research for Healthy Ageing

LLHW is a cross-Research Council initiative led by the Medical Research Council that has invested £30m in multidisciplinary ageing research since 2008

## **LLHW research priorities are:**

- Mental health and cognition in later life
- Physical health in older age
- Extending working lives
- Enhancing mobility and independence in an ageing population



For our strategy, research portfolio and current opportunities see [www.mrc.ac.uk/LLHW](http://www.mrc.ac.uk/LLHW)



## CONFERENCE AND VENUE INFORMATION

### Conference Registration and General Enquiries

The conference registration and general enquiry desk will be situated in the Foyer area of the Chancellor's Building where members from the Keele Conference Team and BSG2012 Organising Committee will be on hand to deal with any queries you may have throughout the event. The desk will be open at the following times:

Wednesday 11 <sup>th</sup> July	10.00 – 18.00
Thursday 12 <sup>th</sup> July	08:00 – 18:00
Friday 13 <sup>th</sup> July	08.00 – 12.00

There will also be a notice board by the registration desk that will provide useful information on programme changes, stream co-ordinators, shuttle bus service, general notices and messages for delegates.

### Accommodation

The conference accommodation will be based in Lindsay Court and The Oaks halls of residence which are based on campus, approximately 5 minutes' walk from the Chancellor's Building where the main conference is being held. There is a shuttle bus service being provided at key times to assist delegates travelling back and forth to their accommodation blocks, details of times are provided below.

Bedroom key registration will be available from the main reception desk which is situated at the entrance to the Chancellor's Building and keys can be collected from this area between 13.00 and 21.30 on the 11<sup>th</sup> & 12<sup>th</sup> July. Late arrivals will be able to pick up their keys from the 24 Hour Security desk situated in the Darwin Building after these times.

Check out for bedrooms is at 09.30 on the day of your departure and all delegates are asked to leave their bedroom keys in the drop in boxes which are situated near the exit of your accommodation block or at the Main Reception Desk in Chancellor's Building.



*Lindsey Court & Holly Cross Exterior, Campus Bedrooms and Ensuite Shower Room*

### Cloakroom & Luggage Store

A cloakroom and luggage store is available for delegates throughout the event and is situated in room CBA0.001 which is located just off the main foyer area in the Chancellor's Building. This room will be locked during the conference sessions for security purposes and access to this area will be available by contacting the main reception desk.

Please note that items left in this area are done so at your own risk and Keele University does not take responsibility should any of your personal belongings go missing.

## Parking

If you have chosen to drive to Keele University you will need to display a parking permit at all times when on the campus. A parking permit will have been sent to you with your joining instructions prior to the event, however if you have forgotten to bring this parking permit with you, please ask at the registration desk for one as soon as you arrive.

Parking at Keele University is free when displaying the permit provided and there is parking available outside Chancellor's Building and the accommodation blocks during your stay.

Please note that Keele University operates a strict parking policy and delegates will be fined, if parking on the campus without displaying a parking permit.

## Conference Badges

The conference name badges will have a key coded colour stripe this year to highlight the different attendee types and packages.

The colour key for these will be as follows:

<b><i>Full Conference Residential Delegate</i></b>	<b><i>Blue</i></b>
<b><i>Full Conference Non Residential Delegate</i></b>	<b><i>Red</i></b>
<b><i>Day Delegate (will state day(s) of attendance in colour)</i></b>	<b><i>Yellow</i></b>
<b><i>BSG2012 Organising Committee</i></b>	<b><i>Green</i></b>
<b><i>Exhibitors</i></b>	<b><i>Orange</i></b>

Please note that all Keele Conference Staff will be wearing Keele University name badges.

## Shuttle Bus Service

We have arranged a shuttle bus service from the Chancellor's Building to the accommodation blocks at key times to help delegates get around the campus. This service will also be provided during the main conference dinner on the Thursday evening which is being held in the grandeur of Keele Hall which is also based on the University Campus.

The shuttle bus service will operate at the following times and will pick up from the main road outside your accommodation block.

### ***Wednesday 11<sup>th</sup> July***

10.00 – 12.30	Operating between Chancellor's Building & Campus Accommodation
21.30 – 23.30	Operating between Chancellor's Building & Campus Accommodation

### ***Thursday 12<sup>th</sup> July***

07.15 – 08.45	Operating between Campus Accommodation & Chancellor's Building
18.00 – 19.00	Operating between Chancellor's Building & Campus Accommodation
19.00 – 20.00	Operating between Campus Accommodation & Keele Hall
22.30 – 00.30	Operating between Keele Hall & Campus Accommodation

### ***Friday 13<sup>th</sup> July***

07.15 – 08.45	Operating between Campus Accommodation & Chancellor's Building
---------------	--



## Facilities

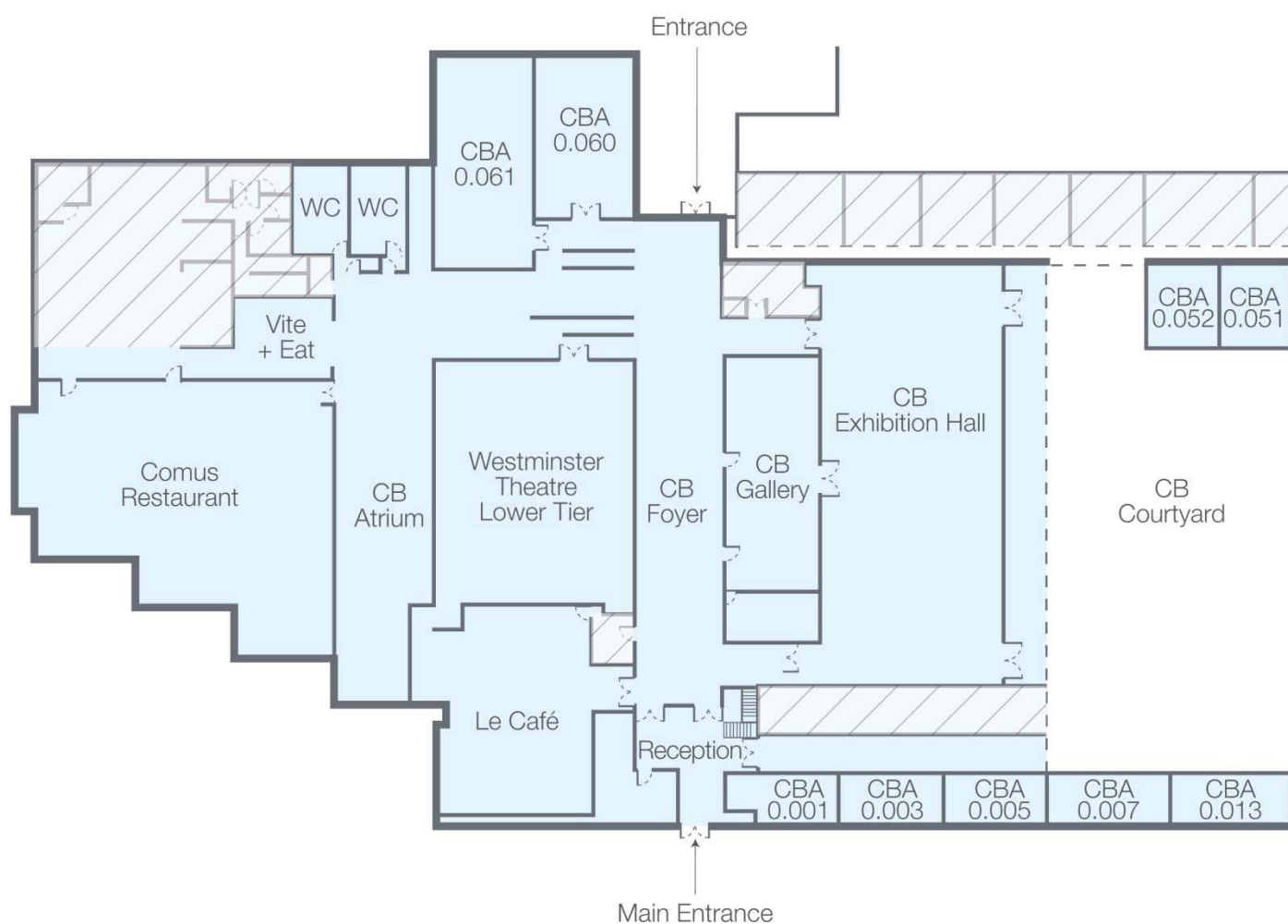
Toilets are located in the Atrium area near the Comus Restaurant of Chancellor's Building.

## Conference Sessions

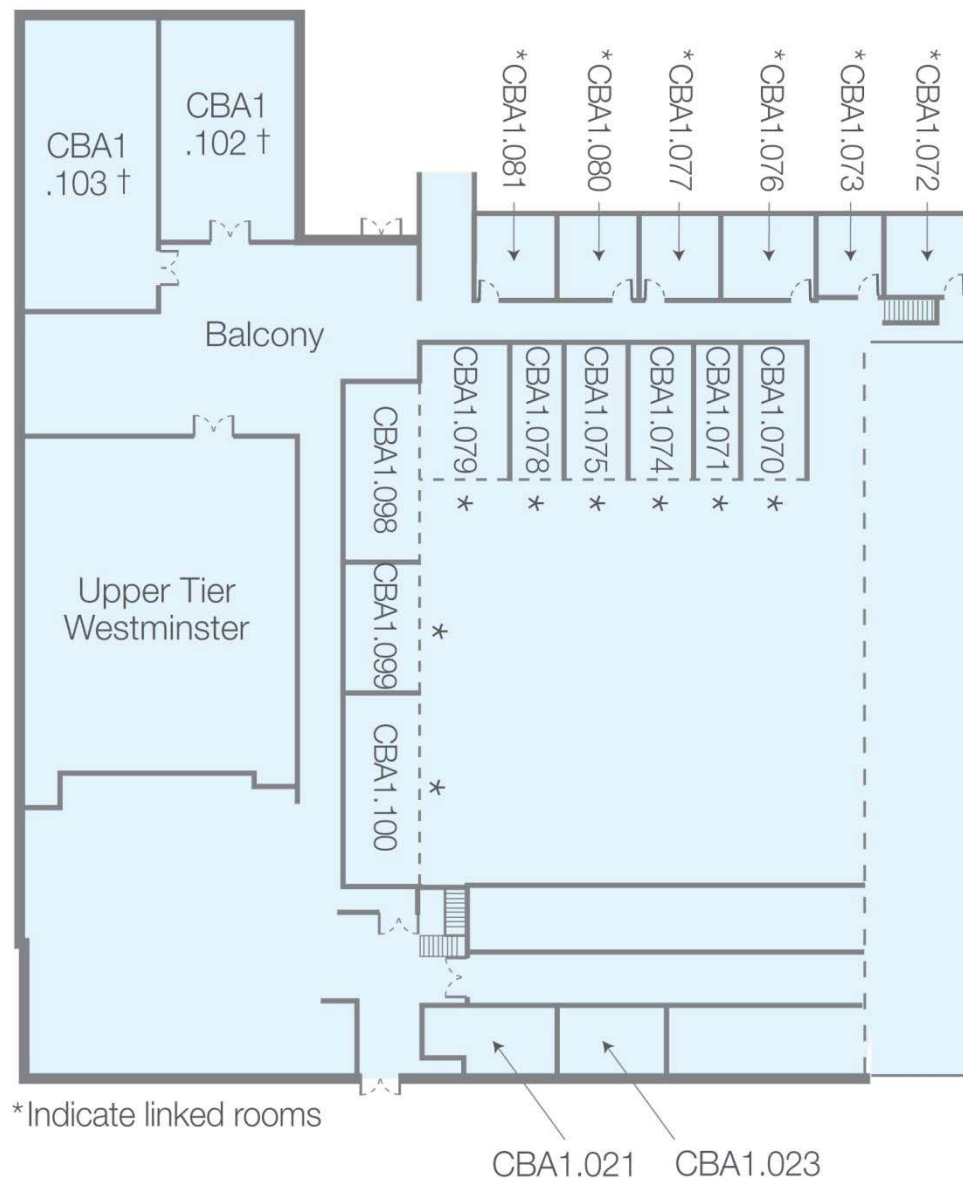
The plenary sessions will be held in the Westminster Theatre which is situated just off the main foyer area in the Chancellor's Building. The oral and symposium presentations will also take place in the Chancellor's Building and all rooms being used can be accessed from the main foyer area either on the ground floor or by steps leading to the first floor. There is access to the first floor for delegates who have mobility issues via a lift at the rear of the building and we have a number of chair lifts for short flights of stairs located around the building. If you have mobility issues and are unsure of the easiest way to get to the room for your chosen session then please ask one of the organising team at the conference registration desk. For details of the rooms being used for the conference sessions please see the paper/ symposium grid on pages 7 - 20.

Below is a plan of the ground floor and first floor of the Chancellor's Building to assist you in navigating your way around the building.

### Chancellor's Building Ground Floor Plan



## Chancellor's Building First Floor Plan



### Accessibility

There is disability access to all areas of the University and automatic door opening systems. If you have indicated your disability at the time of booking then one of the Keele Conference Team will have contacted you to discuss your individual needs. If any additional support is required during the conference then please speak to the staff on the conference registration desk. John Miles from the BSG2012 organising committee will be our dedicated point of contact for queries regarding disability.

### Uploading Oral / Symposium Papers

All presenters have been asked to bring their presentation with them on either a USB memory stick or CD. Once you have registered for the conference then please proceed to the media room which is CBA0.003.

Please ensure that you have virus checked your presentation prior to uploading it onto the Keele University system. All presentations will also be virus checked by our media support staff.

Presenters are asked to come and upload their presentations **at least 2 hours before** their session. If you are presenting early in the morning, then where possible delegates are asked to upload their presentations the day before. There will be instructions in the room to assist you to upload your presentation and we will

have Technical staff on standby who will be available to help. If no one is available in the room to assist and you need some support then please come to the conference registration desk and a member of the organising committee or one of the Keele University Technicians will be contacted and sent to the room to assist you.

When uploading your presentation you will need to know which room and time you have been allocated so you can upload the document to the correct file. Presentations will then be sent to the relevant computer in each session room.

All rooms have multi-media equipment.

Individual oral papers have been allocated a maximum of 20 minutes each: 15 minutes for the paper and 5 minutes for questions. Please remember that it is vitally important to adhere to this time limit. If you don't, it will add to the nervousness of your fellow speakers; it will irritate the audience; and the chair will be put in the embarrassing position of having to stop you.

For oral papers, your session chair will most likely also be one of the presenters. S/he has been asked to make contact with you before your session. Please make sure you know where to go and get there on time. On time in this context means *early* if possible!

## Exhibition and Poster Sessions

The poster presentations and exhibitors will be located in the Exhibition Suite which is adjacent to the main foyer area. Delegates will have the opportunity to visit the exhibitors and view the poster presentations during refreshment breaks which will also be served in this area.

## Stream Co-ordinators

The conference presentations this year have been split into 8 streams and to offer additional support for presenters the BSG2012 organising committee have allocated a member of the team to look after each stream. If you have any queries about your presentation during the conference then you can contact your stream co-ordinator who will assist you. The stream co-ordinators are:

Arts and Humanities - Michelle Rickett

Critical Perspectives – Chris Phillipson

Environment and Ageing – Jenny Liddle

Health, Wellbeing and Care – John Miles and Julius Sim

Intergenerational Perspectives – Julie Melville

New Ageing Populations / New Approaches – Dana Rosenfeld

Participation and Engagement – Bernadette Bartlam

Understanding Dementia – Mo Ray



Comus Restaurant



Westminster Theatre



Keele Hall

## Meals and Refreshments

All meals will be served in the Comus Restaurant, in the Chancellor's Building, other than the main Conference Dinner on the Thursday which is being held at Keele Hall.

The Wednesday evening will include a Staffordshire High Tea which will be served in the Comus Restaurant at 17.15 and has kindly been sponsored by The Beth Johnson Foundation. We will then head to the New Vic Theatre for our special 'Ages and Stages' performance. When we return a late supper will be served in the Comus Restaurant and a cash bar will be available in the Le Café.

The Thursday evening drinks reception and Gala dinner will be held in the grandeur of Keele Hall which is situated on the University Campus. A shuttle bus service will be provided to take delegates to the Hall for the drinks reception which will be held in the Great Hall and Salvin Suite. This will be followed by a 'Staffordshire' themed Gala dinner in the Ballroom. The dinner will conclude with addresses from the Keele University Vice Chancellor, Professor Nick Foskett followed by Dr Alan Hatton-Yeo from The Beth Johnson Foundation. The delegates will then be led out to the beautiful lawns for a fantastic firework display from Kimbolton who are official providers for the opening of the Olympic Games.

All refreshment breaks as detailed in the programme will be served in the exhibition suite. The 'Special' tea break on the Thursday afternoon has kindly been sponsored by Policy Press.



*Keele Hall Exterior, Ballroom and Firework Display overlooking the Lawns*

## Internet Access

The Chancellor's Building has a wireless network and in order to log onto this you will need to obtain a password from the main reception desk. There will also be a computer available in the foyer area should you wish to check emails or use the internet during the conference. Internet is also available in the bedrooms using a wired connection; again you will need to obtain a password from the Chancellor's Building reception desk if you would like to use the internet in your bedroom. You will need an Ethernet cable to connect to the internet in the campus bedrooms. However, if you do not have a cable these are available to purchase from the main reception desk when you collect your password.

Keele University is also connected to Eduroam, so if you use this at your University then you can log on to this network without requiring a password. Further details of how to log onto Eduroam can be found at [www.keele.ac.uk/wireless/eduroam/](http://www.keele.ac.uk/wireless/eduroam/)

## Security

Security Staff are on duty 24 hours a day and their office is located at the 24 hour reception desk in the Darwin Building. Should you need to contact them in an emergency please call 888 from an internal phone or 01782 733004 from an external phone.

## Telephone

Please may we ask that all mobile phones be switched off throughout the conference. All bedrooms are equipped with a free room-to-room/direct-dial telephone, operated by a 'free wire' system. In order to use your room phone externally you will need to go to the main reception desk in the Chancellor's Building to purchase a phone voucher which provides a code allowing you to make external calls. Further information on how to operate the phones for external calls will be provided by the reception staff when purchasing a voucher and if you still have credit on your card after the event, then these can be used on other public pay phones.

## Taxis

If you would like to book at taxis during your stay, there is a free phone telephone service for a local company situated at Chancellor's Building Main Reception desk. If you would like to call a taxi out of reception opening hours then please find below two local taxi firm numbers for your convenience.

ABC Supreme Taxis                      01782 632222

Roseville Taxis                          01782 613245

## Feedback Forms

We are sure that our conference will be a success, but as always we appreciate the feedback and comments from our delegates, so we would ask if you could please complete the questionnaire that has been provided in your delegate pack and return it to the registration desk before you leave. Thank you for you co-operation in advance.

## BSG2012@Keele: the social programme

The conference will offer you an exciting range of social activities and networking opportunities, including:

- The trip (on Wednesday, July 11<sup>th</sup>) to see *Our Age, Our Stage*, a new social documentary performance in our internationally renowned theatre-in-the-round, the New Vic Theatre ([www.newvictheatre.org.uk](http://www.newvictheatre.org.uk)).
- 'A Taste of Staffordshire' Gala Conference dinner Thursday July 12<sup>th</sup>.
- A spectacular firework display over Keele lakes!
- Wine receptions in historic Keele Hall and at the New Vic Theatre.
- Welcome meetings for students, early career researchers and those new to BSG (see below).
- Late bar both evenings.

## Welcome for newcomers over lunch in the Comus restaurant

This year's conference has an exceptionally busy timetable so we have not scheduled a separate session for newcomers to the BSG or early career researchers. Instead there'll be tables set aside in the Comus Restaurant at lunch time on both the Wednesday (from 11.45am) and Thursday (from 1.00pm) where you can introduce yourself and meet other members. John Miles, a PhD student at Keele, and a member of the BSG executive, will be the host. Do come along if you'd like to get to know some of your fellow delegates!

## Time out: taking the air

The Keele campus is an extremely beautiful place and there are waymarked paths beside the lakes in the wooded area to the east beyond Keele Hall. The link below provides a useful guide:

<http://www.keele.ac.uk/media/keeleuniversity/arboretum/downloads/Arboretum%20Guide%202010.pdf> For a longer circuit that takes in Keele village itself (with its fine church yard at the western end of the campus) follow the paths to Lymes Road (either through the main park or down the avenue from the Clock House) and turn right (then right again).



## Time out: breaking into a sweat

Conditions under foot vary a bit and the switches from track to field and road and back again can be a bit abrupt but North Staffordshire is prime jogging country. The website <http://www.walkjogrun.net/running-routes/UK/Staffordshire/Keele/> lists a dozen or so routes from three miles up to a half marathon. We'll have OS maps available for those idealists whose route-planning pre-dates the use of GPS.

Delegates will be entitled to use the gym (and some other) facilities at the Sports Centre, which is nearby on campus, for free. A form and a ten-minute induction will be required for health and safety reasons. Opening hours are 7.30am to 10pm. Phone 01782 733368 or visit <http://www.keele.ac.uk/sport/> for further information.

Lanes swimming starts from 6.30am at the Jubilee 2 Sports Centre (ST5 1HG) near the bus station in Newcastle. Admission is £4. The pool has a state of the art ultra violet system which halves the use of chemical treatments: [http://www.jubilee2.com/pool.php#main\\_pool](http://www.jubilee2.com/pool.php#main_pool) 01782 616606.

## Time out: shops, food and drink, and having a break

There are shops (newsagent, Waterstone's, minimarket) next to the Student's Union and in the Union itself. Newcastle-under-Lyme, a market town with a basic range of shops, banks, is 20 minutes away on the 25 bus (every 10 minutes from campus).

On the campus, the KPA (Keele Postgraduate Association) Clubhouse has a welcoming bar which serves food and has a good atmosphere.

<http://keelepostgraduate.wordpress.com/clubhouse/>

In Keele Village, just off campus, the friendly and lively 'Sneyd Arms' does food up to 9pm (with a strong line-up of well-kept English beers).

<http://www.youtube.com/watch?v=ImHrWyBq8Mo>

Three miles away over the motorway at Whitmore is the 'Mainwaring Arms' (ST5 5HR) which has recently revived its reputation for food

<http://www.thegoodpubguide.co.uk/pub/view/Mainwaring-Arms-ST5-5HR>

There's a decent tea-room and restaurant on the 'shopping estate' at Trentham Gardens estate and garden centre (ST4 8AX) down the A34 <http://www.trentham.co.uk/trentham-gardens>

The Potteries Museum and Art Gallery (ST1 3DW) – including the recently discovered Anglo-Saxon 'Staffordshire Hoard' – is exceptional!

<http://www.visitstoke.co.uk/thedms.aspx?dms=13&venue=2230371>

## JOIN THE BSG!

Membership of the BSG brings you into a community of academics and practitioners interested in a wide range of issues related to ageing. In particular, membership:

- Brings you into a friendly and supportive multidisciplinary group of people who are interested in ageing, ageing studies and older people. Our members include academics, researchers, practitioners, policymakers, students, service users and older people
- Facilitates access to dynamic and up-to date debates about ageing and ageing studies - our members are involved in cutting edge research, policy and practice and are very willing to share their perspectives with you
- Entitles you to significantly reduced rates at the Annual Conferences of the British Society of Gerontology
- Our online newsletter Generations Review enables members to communicate with one another and is a dynamic forum in which to discuss current issues about research, policy and practice
- We provide guidance and support for people wishing to develop careers in ageing studies. Our vibrant group of Emerging Researchers in Ageing, which includes students, postdoctoral researchers and people new to careers in ageing, meet regularly to discuss research, policy and practice and support one another in their careers
- Access to our mailing list (BSGmail) to enable you to keep up-to-date about conferences, seminars, teaching courses, and research about ageing and ageing studies
- If you are a student, postdoctoral or unwaged member, you are entitled to apply for a conference bursary, for example, to cover costs to attend our annual conference
- Entitles you to substantially reduced subscription rates to the following peer reviewed journals: *Ageing and Society* and *Journal of Population Ageing* (NEW FOR 2009)
- Provides you with access to all areas of the BSG website, including the Membership Directory and Members Only pages
- Through the Membership Directory, allows you to contact directly someone with similar research interests locally, nationally and/or international

## Membership Fees

Waged Member	£50.00
Full time student, retired or unwaged	£20.00
Special membership subscription to <i>Ageing &amp; Society</i>	£33.00
Special membership subscription to <i>Journal of Population Ageing</i>	£40.00

## What to do next.....

Go to [www.britishgerontology.org](http://www.britishgerontology.org) and click on "JOIN", follow the instructions online and become a member of the BSG!

BSG ERA (Emerging Researchers in Ageing) is a vibrant network of students and early stage researchers. It provides guidance and support to students, pre and post-doctoral researchers and people who are new to careers in ageing and/or represent the interests of older people. Presently, BSG-ERA represents around a quarter of the overall membership of the British Society of Gerontology. It is structured around a Chair, Committee and Secretariat with the ERA Chair having a voting position on the BSG Executive Committee. The co-chairs of ERA are currently Deborah Cairns (post-doctoral), Brunel University, and Naomi Woodspring (post-graduate), University of the West of England. The ERA Committee constantly strives to offer as many opportunities to its members who come from a diverse range of backgrounds and walks of life. Benefits of membership of the BSG include reduced rates at the BSG annual conferences; free access to the BSG online newsletter 'Generations Review'; reduced subscription to the peer-reviewed journals 'Ageing and Society' and 'Journal of Population Ageing'; and access to the membership directory. ERA members benefit from the above and in addition access to a range of information and resources disseminated through ERAMAIL; ERA annual conferences or seminars and opportunity to apply for conference bursaries.

If you are a BSG student or early stage researcher, come and join us! If you lecture students or work with early stage researchers who are interested in ageing - tell them about us.

Membership of ERA is an optional part of the student membership of the BSG.

If you are already a member of the BSG, but not a member of ERA, please send an email to: ERA@britishgerontology.org requesting membership of the group.

#### **What to do next....**

Go to [www.britishgerontology.org](http://www.britishgerontology.org) and click on —"JOIN", follow the instructions online and become a member of the **BSG** and **ERA** today!

### **ERA Conference 2012**

#### ***'Researching and living later life'***

ERA conferences provide an opportunity for postgraduates and people new to the field of ageing to present their research to a friendly audience, where constructive and supportive feedback can be given. This year's free conference took place on 10<sup>th</sup> July at Keele University.

Around 30 researchers from all over the UK presented in three streams across two sessions. The conference opened with a keynote presentation from Professor Alan Walker, from the University of Sheffield, who has led the New Dynamics of Ageing research programme in the UK.

In the afternoon, a distinguished panel responded to the questions: 'What does it mean to think about gerontology from the perspective of older people as researchers and thinkers? Is there a shift in meaning in their understanding of ageing and where does it lead one?' Delegates were invited to join Anthea Tinker, Bill Bytheway, Elizabeth Sclater, and John Vincent in an open dialogue on becoming old and being old as gerontology, culture, and research – among other mysteries from their rich and experienced perspective – were discussed.

The 2012 ERA conference was funded by the BSG, the Research Institute for Social Sciences at Keele University, and the New Dynamics of Ageing. It was organised by the co-chairs of ERA with the help of students and staff at Keele.



## **Global Ageing: Implications for Individuals and Society**

**11 to 13 September 2013, University of Oxford**

### **Conference Subthemes**

- Health & Care
- Society & Economy
- Research, Methods & Training
- Cultural Ideas & Values

### **Invited Speakers Include**

- Dr John Beard - Director of the Ageing and Life Course Programme, World Health Organization – talking on ageing, health and development
- Prof Axel Boersch-Supan – Director, Munich Center for the Economics of Aging, Max Planck Institute for Social Law and Social Policy – talking on SHARE
- Dr Paul Fairchild – Oxford Stem Cell Institute, University of Oxford – talking on new scientific advances and longevity

### **Host and Venue**

- BSG2013, the 42<sup>nd</sup> annual conference of the British Society of Gerontology, will be hosted by the Oxford Institute of Population Ageing at the University of Oxford
- The venue - Keble College offers a historical setting with modern ensuite accommodation, beautiful gardens and a wide variety of meeting and social spaces.

### **Highlights**

- Meet friends and colleagues from the international gerontological community
- Network with colleagues from Africa and Latin America
- Interact with Oxford medical and health specialists
- Participate in a session with editors of Ageing & Society and the Journal of Population Ageing – both BSG sponsored journals
- Attend a gala dinner in the atmospheric dining hall of Keble College
- Become better acquainted with the city of Oxford and its surroundings

---

**For further information about BSG2013, or to be added to our mailing list for ongoing updates and on ways on how you can support this event please contact:**

**Dr George Leeson or Angelika Kaiser at [angelika.kaiser@ageing.ox.ac.uk](mailto:angelika.kaiser@ageing.ox.ac.uk)**





